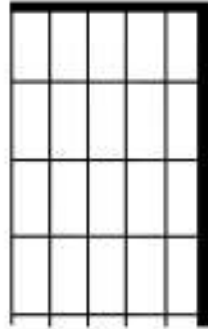
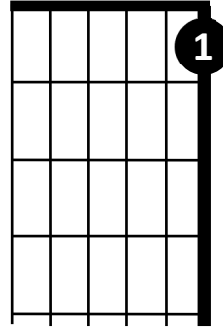


# Notes on the 1<sup>st</sup> String

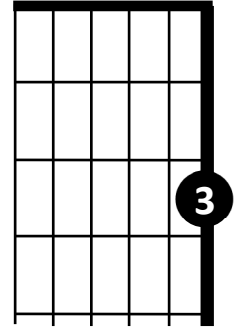
E



F



G



## Exercise 1



## Exercise 2



## Exercise 3



## Exercise 4





# Up and Down



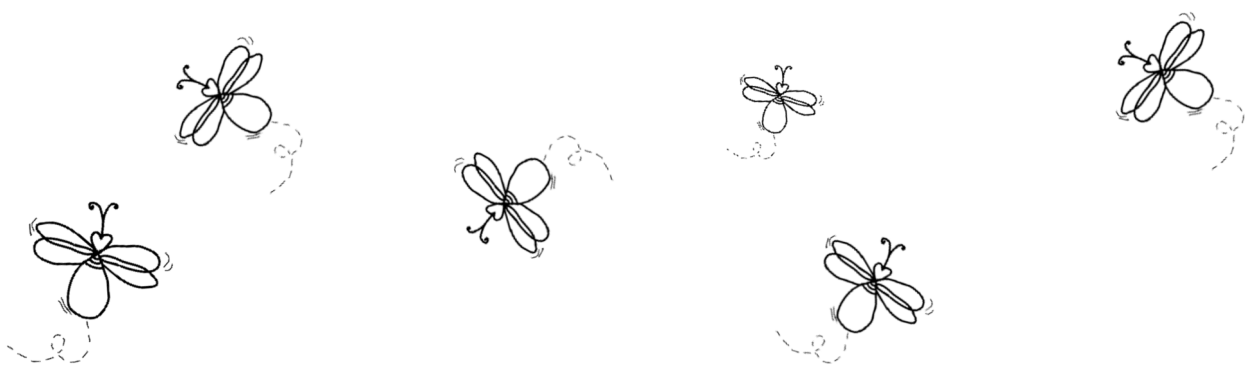
Two staves of musical notation for the piece 'Up and Down'. The first staff has a treble clef and a 4/4 time signature. The notes are: E4, F4, G4, A4, B4, A4, G4, F4, E4, D4, C4, B3, A3, G3, F3, E3. The second staff has a treble clef and a 4/4 time signature. The notes are: E4, E4, D4, C4, C4, C4, D4, E4, E4, E4, D4, D4, D4, C4, E4, D4, C4.

# Serenade

Two staves of musical notation for the piece 'Serenade'. The first staff has a treble clef and a 4/4 time signature. The notes are: B4, E4, B4, E4, C4, D4, C4, B4, B4, E4, B4, E4, C4, D4, C4, B4. The second staff has a treble clef and a 4/4 time signature. The notes are: F4, F4, F4, G4, F4, E4, E4, E4, G4, E4, B4, E4, B4, E4, C4, D4, C4, B4.

# Firefly

Two staves of musical notation for the piece 'Firefly'. The first staff has a treble clef and a 4/4 time signature. The notes are: E4, E4, E4, F4, E4, D4, C4, B4, C4, E4, E4, E4, F4, E4, D4, C4, B4. The second staff has a treble clef and a 4/4 time signature. The notes are: E4, E4, E4, F4, E4, D4, C4, B4, C4, E4, E4, E4, F4, E4, B4, D4, E4.





## End Game

E B E B E B C C B D E B E B E B G G E  
 E B E B E B C C B D E B E B E B G E D E

- ➔ For a challenge and a smoother sound, in **bars 1, 3, 5 and 7**, try using the thumb and index (pointer) finger of your right hand and alternate the playing of notes between them.

If you do this well, not only will you be able to play much smoother but you will be able to play faster as well.

This skill can then be applied to lots of other guitar pieces later in this book.

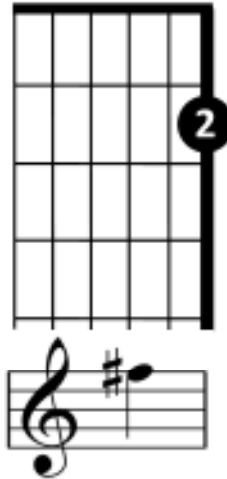
## Jingle Bells

E E E E E E E  
 F F F E D D E D G  
 E E E E E E E G C D E  
 F F F F F E E E G G F D C

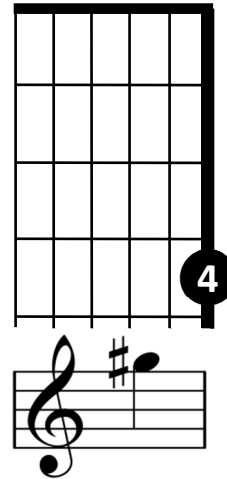
# New Notes on the 1<sup>st</sup> String

SAMPLE

F<sup>#</sup>



G<sup>#</sup>



## Sharpen Up

E E E E F F F F F# F# F# F# G G G G

G# G# G G F# F# F F E E G G E

### Understanding Sharps (♯) and Naturals (♮)

- A sharp (♯) is a symbol used in music to **raise** the **pitch** of a note by one semitone or half-step.
- A natural (♮) is a symbol used in music to **cancel** out a sharp and return the note to its original pitch.

